



TOYOTA

LEAD THE WAY



FJ CRUISER

*With over 60 years of
Land Cruiser in its blood,
the FJ takes the road
very seriously.*



Model shown: 4.0 V6 4x4 AT

With its unique modern-retro styling, unapologetic attitude and power, the FJ Cruiser is as far from middle-of-the-road as you can get. This is not your typical, wanna-be-the-real-deal suburban SUV. The FJ Cruiser has real backbone that's born from real heritage – the indestructible Land Cruiser.

COUP

the power of
Independence

DETAIL

A true revolution in motoring. The FJ is as powerful as it is tough, with its go-anywhere-do-anything attitude. The engine is a powerhouse that kicks out 200 kW of power at 5 600 r/min and 380 Nm of torque at 4 400 r/min. The FJ is not just strong but is also loaded with smart features: an Electronic Fuel Injection (EFI) system, Vehicle-Stability Control (VSC) (which helps ensure stability by automatically adjusting the engine output and the braking force of each wheel to prevent oversteering and understeering on corners), Active Traction Control (A-TRAC) helps ensure excellent traction by controlling the brake pressure if the wheels slip while running off-road when in 4-wheel drive. Crawl Control reduces the input in off-road driving by controlling the accelerator and the brakes as the vehicle moves through rough terrain so all you have to do is steer the vehicle. With a ground clearance of 245 mm, the highest in the Land Cruiser family, no matter how rough the road ahead is, the FJ can tackle it.

the Groundbreaker in you



The exterior design has an unapologetic, bold and extroverted look. The FJ has a wild side, a rogue in the city yet confident off-road. Modern yet retro, the FJ's unique styling demands a unique driver who's not afraid to break the rules.

The FJ's signature white roof makes a bold style statement that is complemented by rugged black bumpers and silver mirrors that are electrically adjustable. 17" alloy wheels, and a full-size alloy spare wheel that is mounted on the rear door to complete the look. The rear spoiler has an integrated brake light, and standard side steps with covers. The extra wide windscreen comes equipped with a 3-arm wiper system and a retractable rear window wiper that is located on the hatch door. Another unique feature of the FJ Cruiser, is that the rear privacy glass windows wrap around the back, adding to its distinct style.

Street cred. Check! The FJ's style isn't just skin-deep, the look outside is perfectly coordinated with the look inside – the interior colour panels match the exterior body colour. The overall impression is bold and confident.

With an interior space that's big on technology, which includes Bluetooth, USB and iPod inputs, you'll always be connected. The FJ delivers an exceptional acoustic experience with its 6-speaker audio system, including two ceiling-mounted speakers. No matter how long or hard the road ahead is, Cruise Control makes for a smooth sailing experience, not to mention power steering and electrically-operated windows make for a more relaxed and enjoyable journey. The rear view mirror has an integrated reverse monitor which automatically switches on when the vehicle is in reverse, meaning there's one less thing to worry about. Since the FJ is built for adventure, it is as practical as it is sophisticated with smart storage spaces that are ideal for small items. The FJ's rear seat has removable cushions and folds 40:60 left and right respectively, allowing for more space to take large items with you on the road. There's also air conditioning to give you a cool/er driving experience, of course.

fully Loaded



REAR-HINGED DOOR DESIGN



FJ CRUISER SCUFF PLATES (FJ SPORT CRUISER)



CARPET SET (FJ SPORT CRUISER)



INCLINE METER



REAR VIEW MIRROR WITH BUILT-IN REVERSE MONITOR





BODY GUARD

full Metal jacket

Not all bodyguards wear black with mirrored sunglasses. The FJ Cruiser not only has your back but has you covered from every angle. The Anti-lock Braking System (ABS) prevents wheels from locking. And just like a bodyguard, you'll also have 'eyes' at the back of your head with a back sonar and sensors that can detect objects behind you. For all of its might, the FJ is also family-friendly with ISO-FIX child restraint seatbelts. Add to that the extra safety ammo of driver and front passenger, side and curtain shield airbags, power door lock and immobiliser, and you're good to go. Anywhere.



SUSTAINABILITY



In line with Toyota's Environmental Plan – ECO-Project, the FJ has been designed to be as green as it can be. Here's what you have to understand to know the FJ's green side: Toyota is committed to reducing the use of substances that contribute to global warming and uses recyclable materials wherever possible.

At Toyota, creating technologically advanced vehicles isn't our only priority; we're committed to lowering our environmental impact throughout our entire production process. How? By setting ourselves six challenges that will see us reach a truly world-changing goal: a positive environmental impact by 2050.



CHALLENGE 1

NEW VEHICLE ZERO CO₂ EMISSIONS CHALLENGE

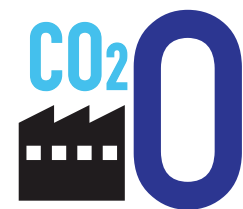
By owning a Toyota, you will be contributing to our challenge to reduce vehicle CO₂ emissions by 90% in comparison to 2010 levels, by 2050. You will help us promote the development of next-generation vehicles and further accelerate the spread of these vehicles.



CHALLENGE 2

LIFE CYCLE ZERO CO₂ EMISSIONS CHALLENGE

Your purchase is lending a helping hand to Toyota's efforts to reduce to zero, not only CO₂ emissions produced in travelling and manufacturing, but all CO₂ emissions included in the process of materials production, disposal and recycling of vehicles.

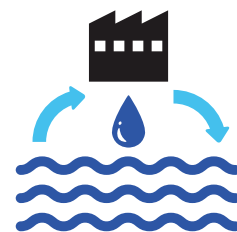


CHALLENGE 3

PLANT ZERO CO₂ EMISSIONS CHALLENGE

Our strategies to achieve zero CO₂ emissions at our plants are:

- 1) Developing and introducing low-CO₂ technologies with ongoing "Kaizen".
- 2) Adopting renewable energy sources and utilising hydrogen energy.



CHALLENGE 4

CHALLENGE OF MINIMISING AND OPTIMISING WATER USAGE

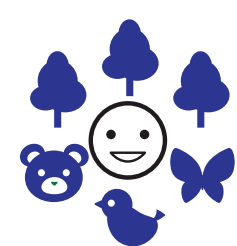
In automobile manufacturing, we use water in painting, forging and other processes. Therefore, even a small reduction of its impact on the water environment is important. We have two measures to achieve this. These are the comprehensive reduction of the amount of water used, and comprehensive water purification and returning it to the earth.



CHALLENGE 5

CHALLENGE OF ESTABLISHING A RECYCLING-BASED SOCIETY AND SYSTEM

We have been working for 40 years on our resource recycling challenge. We will continue working on the challenge of establishing a recycling-based society by rolling out the technology and systems evolved in Japan, to the world.



CHALLENGE 6

CHALLENGE OF ESTABLISHING A FUTURE SOCIETY IN HARMONY WITH NATURE

At Toyota, we have engaged in planting trees at our plants and environmental conservation activities in our surrounding areas. We are also promoting several activities across regions and the world to establish a society where humans and nature coexist in harmony.



The Full Story

Engine and drivetrain	4.0 V6 4x4 AT
Displacement (cm³)	3956
Cylinder configuration	6 cylinders, V-type
Maximum power (kW @ r/min)	200 @ 5600
Maximum torque (Nm @ r/min)	380 @ 4400
Valve mechanism	24-valve DOHC with dual VVT-i
Bore x stroke (mm)	94.0 x 95.0
Fuel system	EFI
Compression ratio	10.0 : 1
Pre-air cleaner	•
Exhaust emission control	EURO3 L/0BD
Transmission	5-speed AT
Rear differential	3.727 BD21B face hob
Auto disconnect differential	•
Differential lock	•
Front suspension	Double wishbone
Rear suspension	4-link with lateral rod
Towing hook: front x 2/rear x 1	•
Deck hook: floor x 4/side x 4	•
Wheels and tyres	
Front wheel brake	Disc 16"
Rear wheel brake	Disc 15"
Wheel cap	17" Alloy cap
Spare tyre	Ground alloy
Spare Wheel Cover	With back monitor integrated
Spare Wheel Carrier	Back door hub nut with lock
Body and styling	
Over fender	Black EC type
Side and rear step	•
Rear side glass	Privacy
Rear quarter glass	Privacy
Rear Glass	Privacy
Rear window defogger	•
Front grille	Black
Mud guards	•
Roof rack (mountings only)	•
Door outside handle	Colour
Rear door outside handle	Black
Headlamp	Wave reflector eco type
Headlamp leveling	Manual
Rear combination lamp	Bulb EC type
Front fog lamp	•
High mount stop lamp: in rear spoiler	•
Rear fog lamp	•
Outside rear-view mirror	Power, aluminum brush
Door scuff plate	With inner plate and outer tape
Interior, comfort and convenience	
Cruise control	•
Shift lever and knob	Urethane with metal colour
4WD transfer lever and knob	Styled metallic
Steering column	Head, swing, tilt
Power steering	•
Steering wheel	Leather with cruise control, audio and Bluetooth
Power window	•

Interior, comfort and convenience	4.0 V6 4x4 AT
Windshield wiper	Intermittent
Rear window wiper	•
Inside rear-view mirror	Electrochromatic, 3.3" monitor, mike and temperature
Floor carpet and mat	Rubber type
Cup holders	•
Glove box	•
Rear console box	•
Over-head console	With off road switch
Air conditioner	•
Clean air filter	Fine filter
Side defroster	•
Front seat	Bucket - driver: 8 way
Rear seat	With fold, left: 40/Right: 60 split
Seat back pocket	Driver and passenger net pocket
Accessory connector	Front: 12 V, 120 W and Rear: 12 V, 120 W x 2
Meter illumination control	•
Light remind warning	Auto cut
Audio	AM/FM, 1 CD and 6 speakers
Bluetooth	•
Audio jack	Aux and iPod-USB
Clearance and back sonar	Electrochromatic - back sonar 2-sensor
Back monitor	Within inner mirror
Service and warranty	
Service intervals	12 months / 10 000 km
Service plan	9 services / 90 000 km
Warranty	3 years / 100 000km
Safety and security	
Anti-lock Braking System (ABS)	•
Vehicle-Stability Control (VSC)	with Active Traction Control and Crawl Control
Anti-theft system	Immobiliser
Power door lock	with driver switch
Wireless door lock	•
Child restraint system	Rear: 2 x ISO-FIX3 tether
Airbags	Driver, front passenger, side and curtain shield airbags
Dimensions and capacities	
Fuel Tank Capacity	72ℓ and 87ℓ sub tank
Overall length (mm)	4670
Overall width (mm)	1905
Overall height (unladen) (mm)	1830
Wheelbase (mm)	2690
Approach angle (degrees)	34
Departure angle (degrees)	31
Front tread (mm)	1605
Rear tread (mm)	1605
Min ground clearance (mm)	245
Front overhang (mm)	865
Rear overhang (mm)	1115
Luggage capacity (m³)	0.99
Curb weight (kg) (Max)	2045 - 2065
Gross combined mass (kg)	4010
Gross vehicle weight/mass (GVM) (kg)	2510



058 IVORY WHITE



2KY CEMENT GREY



2KC ONYX BLACK METALLIC



2KP SANDSTORM



3LS RED MONOTONE



5A3 YELLOW AND WHITE



Toyota vehicles are known for their Quality, Durability and Reliability. Keeping your Toyota Genuine means no compromises in terms of safety, performance and resale value. The range of Genuine Products and Approved Services will ensure complete peace of mind throughout the ownership journey and beyond. For more information on how to Keep Your Toyota Genuine visit www.toyota.co.za/genuine

TOYOTA GENUINE PRODUCTS

For guaranteed fit and function, Genuine Parts are essential in maintaining the safety and reliability of your vehicle. **Genuine Parts** comply with all safety, regulatory and environmental requirements, making it the obvious choice. The same exacting precision applies to **Toyota Accessories**, developed by engineers with extensive knowledge on vehicle integration - you can enhance the appeal and functionality of your FJ Cruiser without compromising its safety features or warranty. Warranties are about peace of mind, and the **Genuine Unlimited Warranty** is designed to provide superior cover (up to 6 or 8 years, unlimited mileage) and a seamless claims process thanks to full integration with Toyota systems. The **Genuine Extended Service Plan** also enjoys exclusive approval by Toyota SA and provides flexible extension options up to 10 years or 200 000 km to suit your period of ownership. Paying today's rates for tomorrow's maintenance is a sensible way to protect the resale value of your FJ Cruiser by means of a full service history.

TOYOTA APPROVED SERVICES

Specialised vehicle maintenance requires first-class facilities, advanced equipment and expert knowledge. **Toyota Quality Service and Value Service** not only promise accurate diagnosis and repair, but also a philosophy of building trust through a genuine concern for the needs of our customers. To complement the extensive network of Toyota dealers, we have a vast number of **Accredited Body and Paint Repairers**, selected on stringent criteria to ensure outstanding workmanship and customer service. You can maintain your vehicle's pristine condition without compromising its warranty thanks to the exclusive use of Genuine Parts by our Accredited Repairers. Offering 24-hour access to a full complement of assistance and recovery benefits, **Toyota Roadside Assistance** provides the peace of mind that competent support is only a phone call away.

TOYOTA GENUINE MEANS

✓ UNCOMPROMISED SAFETY ✓ GUARANTEED QUALITY ✓ PEACE OF MIND



Download the **MyToyota** App from the [Google Play Store](#) or the [App Store](#) to receive the latest Toyota news, keep an eye on your vehicle's finance and book your vehicle for a service. You can also book a test drive or arrange roadside assistance, all on your phone.

DISCLAIMER:

The information contained in this brochure is provided as is and without any warranties of any kind, whether expressed or implied, including but not limited to, implied warranties of satisfactory quality, fitness for a particular purpose and/or correctness. The contents of this brochure are for general information purposes only and do not constitute advice. Toyota Motor Corporation of Japan and Toyota South Africa Motors (Pty) Limited does not represent or warrant that the information and/or specifications contained in this brochure are accurate, complete or current and specifically stipulates that certain vehicle details and specifications contained in this brochure may differ in available models. Therefore, neither Toyota Motor Corporation of Japan nor Toyota South Africa Motors (Pty) Limited make any warranties or representations regarding the use of the content, details, specifications, or information contained in this brochure in terms of their correctness, accuracy, adequacy, usefulness, timeliness, reliability or otherwise, in each case to the fullest extent permitted by law. Please note that claiming of input VAT needs to be verified by customers prior to vehicle purchase as these rulings are subject to SARS interpretation. Toyota South Africa Motors' rights remain reserved.

TOYOTA FINANCIAL SERVICES

There is no 'one-size-fits-all' when it comes to vehicle finance and insurance, there is only you. With fast, flexible and convenient services we will structure the perfect FJ Cruiser deal for you.

At Toyota Financial Services, we believe that purchasing your Toyota should be as enjoyable as driving it. Toyota Financial Services is the fast, flexible and convenient means of financing your FJ Cruiser. We have created a range of financial products that suit both private and business customers, easily accessible through your local Toyota dealer. We take the hassle out of arranging finance.

Toyota Financial Services (South Africa) Ltd is an authorised Financial Services (FSP No. 7454) and Registered Credit Provider (NCRCP62). For comprehensive information about products offered by Toyota Financial Services, visit www.toyota.co.za/toyota-finance



